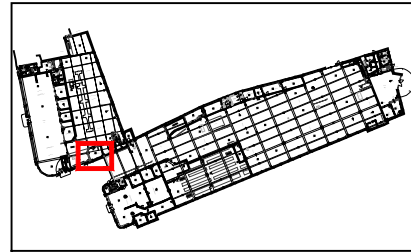


This drawing and the design are the copyright of **ON Architecture Ltd** only.
 This drawing should not be copied or reproduced without written consent.
 All dimensions are to be checked on site prior to setting out and fabrication and **ON Architecture Ltd** should be notified of any discrepancy prior to proceeding further.
 For Construction & Fabrication Purposes - Do not scale from this drawing, use only the illustrated dimensions herein. Additional dimensions are to be requested and checked directly.
 Illustrated information from 3rd party consultants/specialists is shown as indicatively only. See other consultants / specialist drawings for full information and detail.

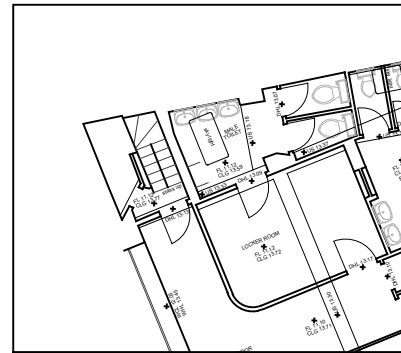
Scale:
 0 1 3 5 10m



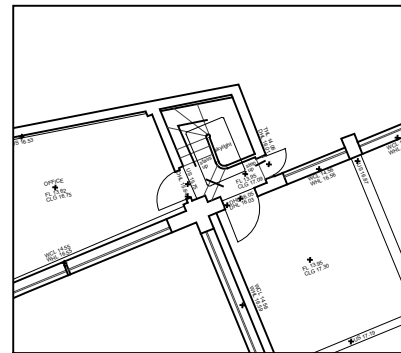
Location Plan 1:1250

Stair Description

Original Art Deco style utility stair serving the mezzanine and first floors. The stair treads and landings are finished in grey granolith with painted edge feature. The plastered walls are terminated with a painted edge feature. The plastered walls are terminated with a timber handrail mounted on painted steel brackets. The head of the stair has a glazed rooflight.



Mezzanine Floor Plan



First Floor Plan



Revision Note & Date				Amended	Checked
Rev	Date	Note			
-					



Canterbury Studio
 Logan House, St Andrews Close
 Canterbury,
 CT1 2RP
 info@onarchitecture.co.uk
 onarchitecture.co.uk
 01227 634334

London Studio
 Ink Rooms, 25-37, Easton Street
 Clerkenwell
 WC1X 0DS

Project Title
Len House (Rootes Maidstone)

Client Details
Classicus Estates

Drawing Title
**Listed Building Condition 08
 Record Photographs - Stair 02**

BIM Number

Scale	Date	Drawn	Checked
1:100	Nov 2020	JT	PH

Drawing Status
Planning

Project No.	Drawing No.	Status	Revision
20.061	RP01-02	S2	-