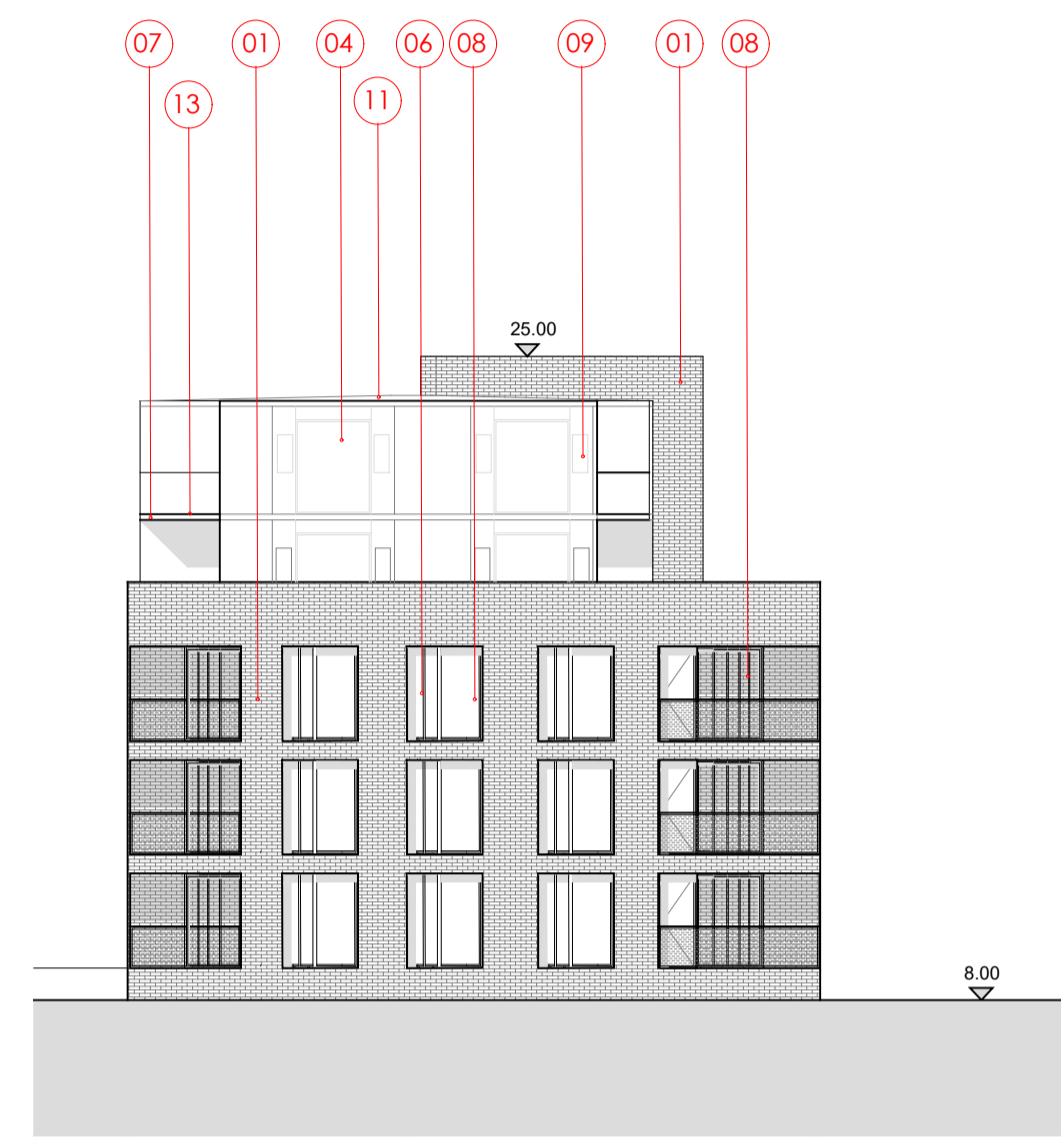
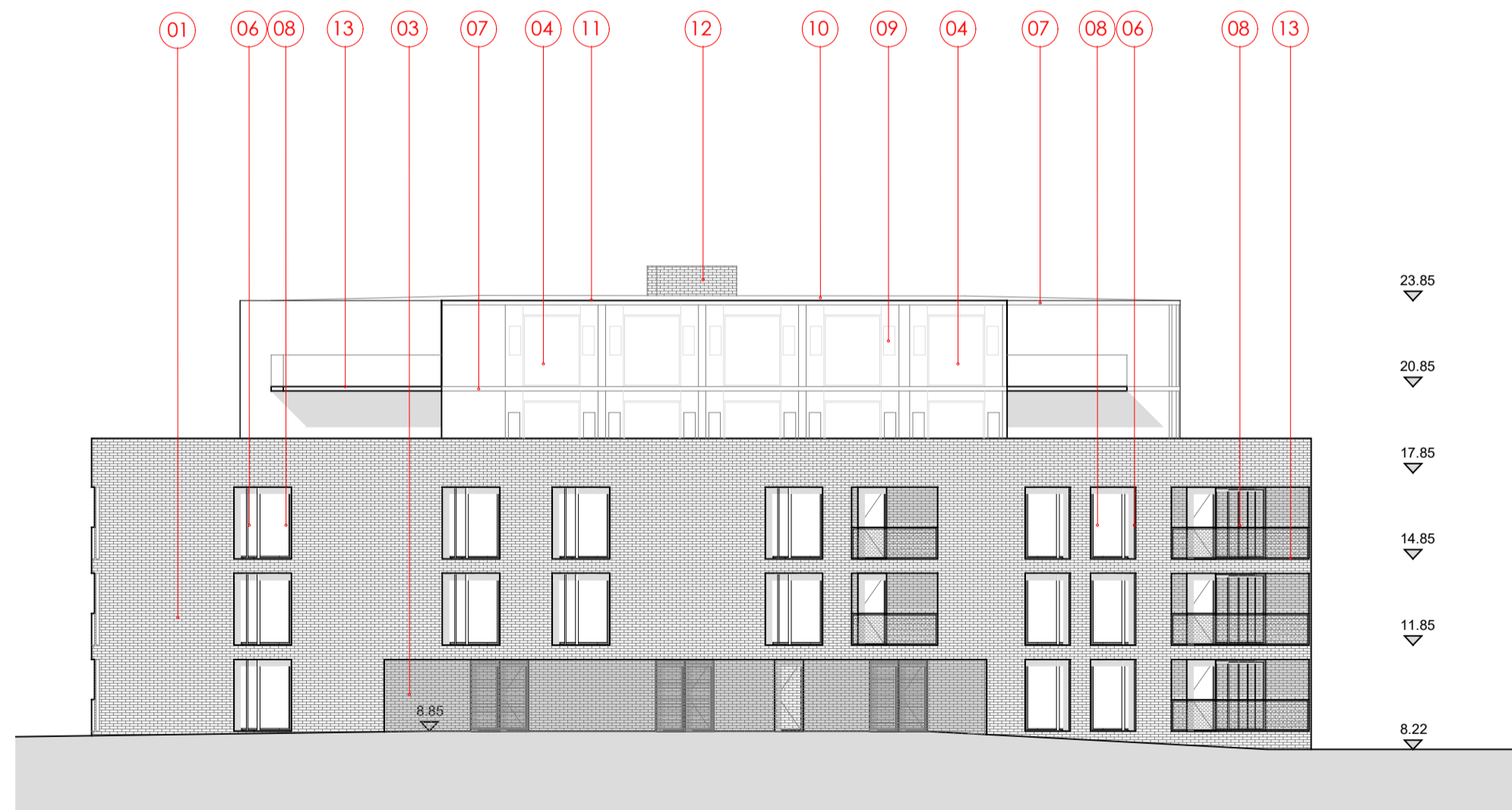




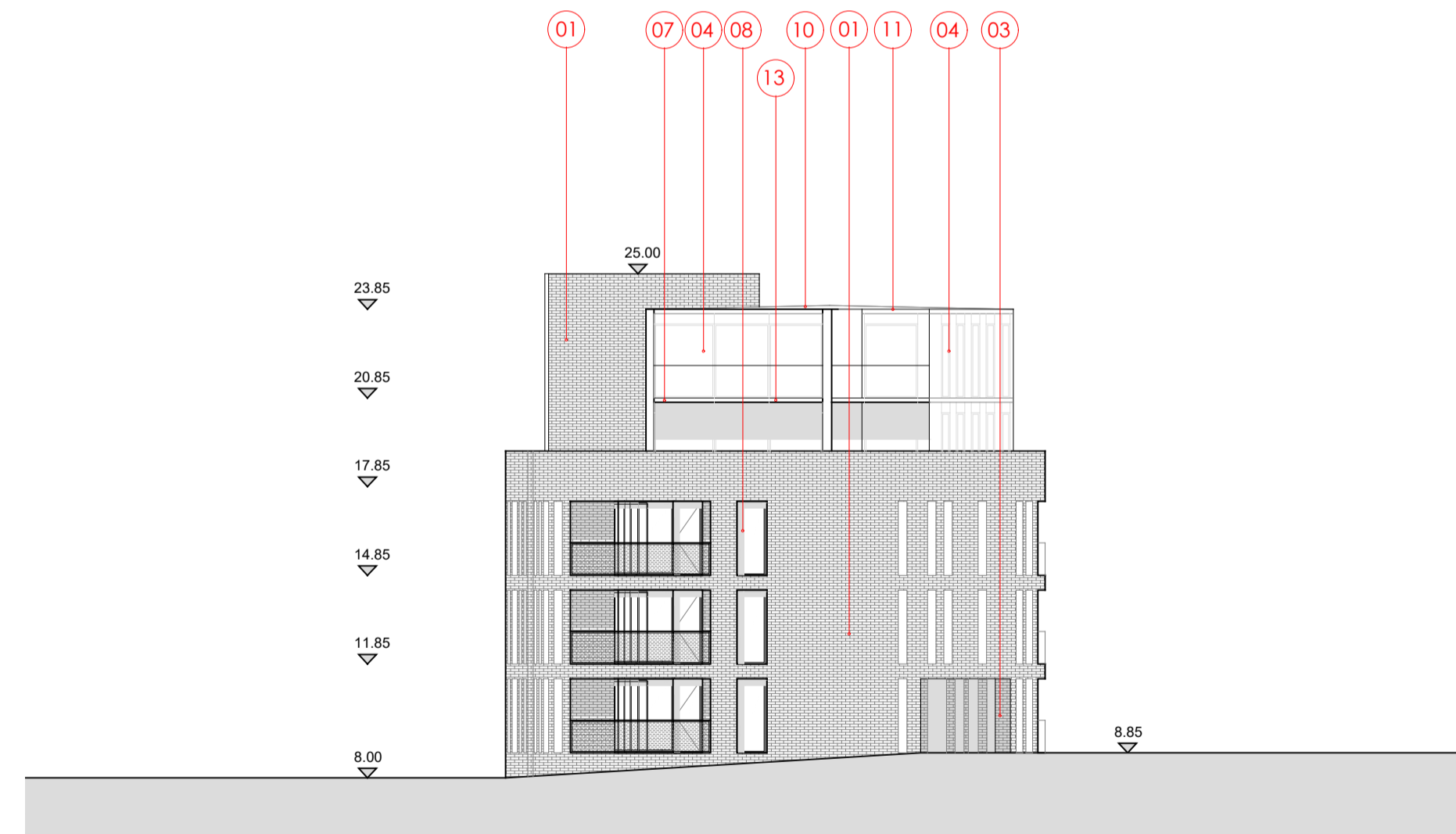
ELEVATION N
1:200 SCALE



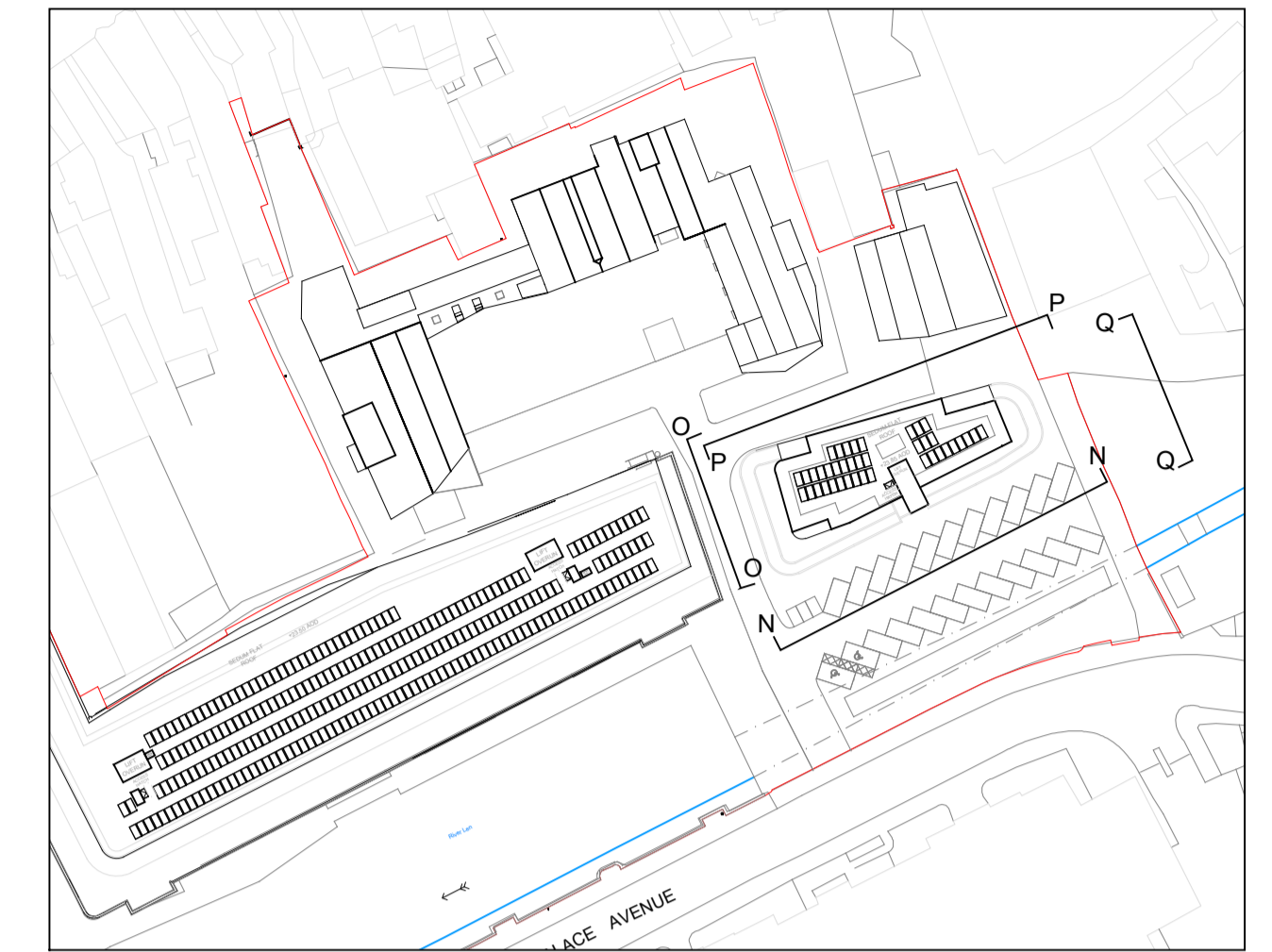
ELEVATION O
1:200 SCALE



ELEVATION P
1:200 SCALE



ELEVATION Q
1:200 SCALE



KEY PLAN
1:1000 SCALE

PROJECT MATERIAL PALETTE

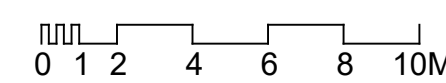
- 01 White coloured brick
- 02 White Coloured Hit & Miss Brickwork
- 03 Contrasting coloured brickwork (Colour TBC)
- 04 Curtain wall glazing system. Powder coated (Colour TBC)
- 05 Sliding doors as part of curtain wall system. With glazed balustrades
- 06 Aluminium panels with ventilation grills as part of glazing system. Powder coated (Colour TBC)
- 07 Aluminium canopies/flashings/fascias etc. To match windows
- 08 Aluminium window & door system. Powder coated (Colour TBC)
- 09 Metallic feature vent panels
- 10 Sedum roof with Solar PV Panels
- 11 Pebble Border
- 12 Brick clad lift shaft and overrun
- 13 Timber HPL composite decking to balcony & terrace floors
- 14 Outline of PV Panel Area

All internal layouts are shown for illustrative purposes only

All landscape shown indicatively

Len House (Rootes Maidstone)
PROPOSED REAR BUILDING ELEVATIONS 03

This drawing is the copyright of **guy hollaway** architects and should not be copied, reproduced without written consent. All Rights Reserved.
All dimensions are to be checked on site prior to fabrication and the Architect should be notified of any discrepancy



Revisions

20.04.27 - Revision B: General Update. Please see Cover Note.

Project | Len House (Rootes, Maidstone)
Mill Street, Maidstone

Client | Len House (Maidstone) Ltd part of Classicus Estates

Title | Proposed Rear Building Elevations 03

Status | Planning

Scale@A1 | 1:200 Date | 21.01.20 Drawn | RW

Checked | 26.02

guy hollaway

London | Fourth Floor | 251 Pentonville Road | London | N1 9JG
T +44 (0) 20 7014 4900 | F +44 (0)1303 266 214 | E london@guyhollaway.co.uk | W www.guyhollaway.co.uk

Kent | The Ironway Stables | Romford Road | Hythe | Kent | CT21 5BG
T +44 (0)1303 266 214 | F +44 (0)1303 266 214 | E kent@guyhollaway.co.uk | W www.guyhollaway.co.uk

Project Number | Drawing Number | Revision

19.027 | 260.02 | A

Rev Number