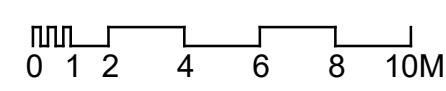


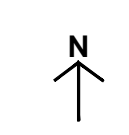


Len House (Rootes Maidstone)
PROPOSED REAR DEVELOPMENT THIRD FLOOR PLAN

©This drawing is the copyright of **guy hollaway** architects and should not be copied reproduced without written consent. All Rights Reserved.
 All dimensions are to be checked on site prior to fabrication and the Architect should be notified of any discrepancy



SITE AREA: 1.379Ha
 SITE BOUNDARY □



Revisions
 20.04.27 - Revision A: General Update. Please see Cover Note.
 20.05.07 - Revision B: General Update. Please see Cover Note.

Project | Len House (Rootes, Maidstone)
 Mill Street, Maidstone
 Client | Len House (Maidstone) Ltd part of Classicus Estates
 Title | Proposed Rear Development Third Floor Plan
 Status | **PLANNING**
 Scale@A1 | 1:200 Date | 21.01.20 Drawn | RW CHK'd | JTG

guy hollaway
 London | Fourth Floor | 251 Pentonville Road | London | N1 9NG
 T +44 (0) 20 7014 4900 | F +44 (0)1303 269 214 | E london@guyhollaway.co.uk | W www.guyhollaway.co.uk
 Kent | The Tramway Stables | Ramcroft Road | Hythe | Kent | CT21 5EG
 T +44 (0)1303 260 515 | F +44 (0)1303 269 214 | E kent@guyhollaway.co.uk | W www.guyhollaway.co.uk
 Project Number | **19.027** Drawing Number | **210.04** Revision | **B**
 Rim Number